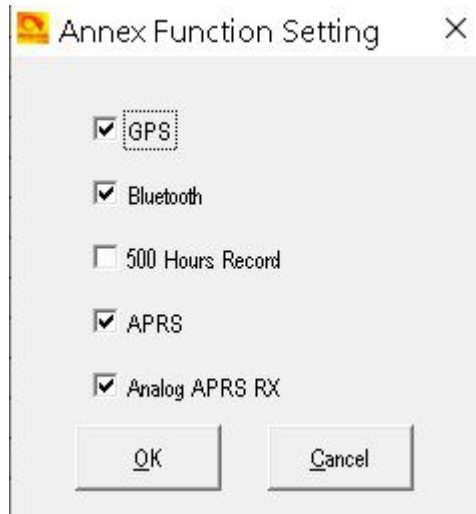


# Analogue APRS RX v7

## 1. CPS – Tools - Options – turn on



Newer firmware will have more options

## 2. CPS - APRS Setting - To RX all on APRS frequency 144.8000

|                              |                |           |      |
|------------------------------|----------------|-----------|------|
| Analog                       |                |           |      |
| APRS TX Tone                 | Off            |           |      |
| TOCALL                       | APDR10         |           |      |
| TOCALL SSID                  | 0              |           |      |
| Your Call Sign               |                |           |      |
| Your SSID                    | -2             |           |      |
| APRS Symbol Table            | /              |           |      |
| APRS Map Icon                | I              |           |      |
| Digipeater Path              | WIDE1-1WIDE2-1 |           |      |
| Enter Your Sending Text      |                |           |      |
| Transmission Frequency [MHz] | 144.80000      |           |      |
| Transmit Delay [ms]          | 1200           |           |      |
| Send Sub Tone                | Off            |           |      |
| CTCSS                        | 62.5           |           |      |
| DCS                          | D000           |           |      |
| Prewave Time [ms]            | 1200           |           |      |
| Transmit Power               | Mid            |           |      |
| Ana AprsTx                   | Narrow         |           |      |
| No.                          | Receive Filter | Call Sign | SSID |
| 1                            | Off            |           | Off  |
| 2                            | Off            |           | Off  |
| 3                            | Off            |           | Off  |
| 4                            | Off            |           | Off  |
| 5                            | Off            |           | Off  |
| 6                            | Off            |           | Off  |
| 7                            | Off            |           | Off  |
| 8                            | Off            |           | Off  |
| POSITION                     |                |           |      |
| MIC-E                        |                |           |      |
| OBJECT                       |                |           |      |
| ITEM                         |                |           |      |
| MESSAGE                      |                |           |      |
| WX REPORT                    |                |           |      |
| NMEA REPORT                  |                |           |      |
| STATUS REPORT                |                |           |      |
| OTHER                        |                |           |      |

Transmit Delay [ms] = 1200

Prewave Time [ms] = 1200

Ana Aprs TX = Wide or Narrow (Both/All radios must be set the same) **UK is Narrow.**

### Newer Firmware will have this for Frequencies

|                               |           |                               |         |                               |         |
|-------------------------------|-----------|-------------------------------|---------|-------------------------------|---------|
| Analog                        |           |                               |         |                               |         |
| Transmission Frequency1 [MHz] | 144.80000 | Transmission Frequency2 [MHz] | 0.00000 | Transmission Frequency3 [MHz] | 0.00000 |
| Transmission Frequency4 [MHz] | 0.00000   | Transmission Frequency5 [MHz] | 0.00000 | Transmission Frequency6 [MHz] | 0.00000 |
| Transmission Frequency7 [MHz] | 0.00000   | Transmission Frequency8 [MHz] | 0.00000 |                               |         |

## 3. Next we make a Channel up for 144.8000

Keep in mind 144.8000 is for data only and not for voice traffic in the UK

**So I have PTT Prohibit ticked**

Tick APRS RX

**Channel Information Edit---69**

Channel Name: APRS RX/TX

Receive Frequency: 144.80000  
 Transmit Frequency: 144.80000  
 Correct Frequency[Hz]: 0

Channel Type: A-Analog  
 Transmit Power: Low  
 Band Width: 12.5K  
 Busy Lock: Off  
 Scan List: None  
 APRS Report Type: Off  
 Analog APRS PTT Mode: Off  
 Digital APRS PTT Mode: Off  
 Digital APRS Report Channel: 1  
 Exclude channel from roaming: off  
 DMR MODE: DMO/simplex  
 Analog APRS Report Freq: 1

☐ PTT Prohibit ☐ Talk Around(Simplex) ☒ APRS RX  
☐ Work Alone ☐ DataACK Disable ☐ Auto Scan ☐ Ana Aprs Mute

Digital

Contact: 9  
 Radio ID: M6NBP Norman Brighton UK  
 Color Code: 1  
 Slot: Slot1  
 Receive Group List: None  
 Digital Encryption: Off  
 Extend Encryption: AES  
 ARC4 Encryption Code: Off  
 AES Digital Encryption: Off  
 Multiple Key: Off  
 Random Key: Off  
 SMS Forbid: Off

☐ Send Talker Alias ☐ Call Confirmation ☐ Ranging  
☐ Slot Suit ☐ SMS Confirmation

Even though the UK should be narrow on the APRS RX/TX Frequency

144.8000 MHz Unconnected nets - APRS, UiView etc (Note 14)

Note 14: 144.800 use should be NBFM to avoid interference to 144.8125 DV Gateways

You might wish to set **Band Width** to 25K wide. Sorry to say, too many are still using WIDE

Add to Zone and send to Radio

Go to Channel and you will RX all Analogue APRS

#### 4. In this next section we cover only RX preferred station

| No. | Receive Allow | Call Sign | SSID |
|-----|---------------|-----------|------|
| 1   | Off           |           | Off  |
| 2   | Off           |           | Off  |
| 3   | Off           |           | Off  |
| 4   | Off           |           | Off  |
| 5   | Off           |           | Off  |
| 6   | Off           |           | Off  |
| 7   | Off           |           | Off  |
| 8   | Off           |           | Off  |

Fill in as required to only RX that station

<http://tiny.cc/Anytone-DMR>

## 5. TX & RX Analogue APRS on a different Frequency / Channel

This is for radio to radio (*Not over the APRS Network*)

The newer firmware and CPS lets you have up to 8 different Frequencies/Channels.

*Ideal for large events (RAYNET) and you want the location of each user on each different channels, but do not wish to go out on the APRS Network for privacy.*

Same as the above and we will use a Simplex Frequency 433.40000

Channel Name: SU16

Receive Frequency: 433.40000  
Transmit Frequency: 433.40000  
Correct Frequency[Hz]: 0

Channel Type: A-Analog  
Transmit Power: Low  
Band Width: 12.5K  
Busy Lock: Off  
Scan List: Simplex  
APRS Report Type: Off  
Analog APRS PTT Mode: Off  
Digital APRS PTT Mode: Off  
Digital APRS Report Channel: 1  
Exclude channel from roaming: off  
DMR MODE: DMO/simplex  
Analog APRS Report Freq: 1

☐ PTT Prohibit ☐ Talk Around(Simplex) ☒ APRS RX  
☐ Work Alone ☐ DataACK Disable ☐ Auto Scan ☐ Ana Aprs Mute

Digital

Contact: 9  
Radio ID: M6NBP Norman Brighton UK  
Color Code: 1  
Slot: Slot1  
Receive Group List: None  
Digital Encryption: Off  
Extend Encryption: AES  
ARC4 Encryption Code: Off  
AES Digital Encryption: Off  
Multiple Key: Off  
Random Key: Off  
SMS Forbid: Off

☐ Send Talker Alias ☐ Call Confirmation ☐ Ranging  
☐ Slot Suit ☐ SMS Confirmation

As this is a simplex frequency and permits voice traffic you will see PTT Prohibit is not ticked

## 6. Now in APRS Settings we need to change the Transmission Frequency [MHz] to 433.40000

Analog

|                                 |                |                              |           |     |                |           |      |  |
|---------------------------------|----------------|------------------------------|-----------|-----|----------------|-----------|------|--|
| APRS TX Tone                    | Off            | Transmission Frequency [MHz] | 433.40000 | No. | Receive Filter | Call Sign | SSID | <input checked="" type="checkbox"/> POSITION<br><input checked="" type="checkbox"/> MIC-E<br><input checked="" type="checkbox"/> OBJECT<br><input checked="" type="checkbox"/> ITEM<br><input checked="" type="checkbox"/> MESSAGE<br><input checked="" type="checkbox"/> WX REPORT<br><input checked="" type="checkbox"/> NMEA REPORT<br><input checked="" type="checkbox"/> STATUS REPORT<br><input checked="" type="checkbox"/> OTHER |
| TOCALL                          | APDR10         | Transmit Delay [ms]          | 1200      | 1   | Off            |           | Off  |  |
| TOCALL SSID                     | 0              | Send Sub Tone                | Off       | 2   | Off            |           | Off  |  |
| Your Call Sign                  |                | CTCSS                        | 62.5      | 3   | Off            |           | Off  |  |
| Your SSID                       | -2             | DCS                          | D000      | 4   | Off            |           | Off  |  |
| APRS Symbol Table               | /              | Prewave Time [ms]            | 1200      | 5   | Off            |           | Off  |  |
| APRS Map Icon                   | I              | Transmit Power               | Mid       | 6   | Off            |           | Off  |  |
| Digipeater Path                 | WIDE1-1WIDE2-1 |                              |           | 7   | Off            |           | Off  |  |
| Enter Your Sending Text         |                |                              |           | 8   | Off            |           | Off  |  |
| Ana AprsTx: <span>Narrow</span> |                |                              |           |     |                |           |      |  |

## Newer Firmware will have this for Frequencies

Analog

|                              |           |                              |           |                              |           |
|------------------------------|-----------|------------------------------|-----------|------------------------------|-----------|
| Transmission Frequency1[MHz] | 144.80000 | Transmission Frequency2[MHz] | 433.40000 | Transmission Frequency3[MHz] | 144.80000 |
| Transmission Frequency4[MHz] | 144.80000 | Transmission Frequency5[MHz] | 144.80000 | Transmission Frequency6[MHz] | 144.80000 |
| Transmission Frequency7[MHz] | 144.80000 | Transmission Frequency8[MHz] | 0.00000   | PASS ALL                     | On        |

You will see I am using 2 for the 433.40000 frequency

In that channel I set for 2

Analog APRS Report Freq 2

Follow Step 4 if required

The maximum received number is 256, the older ones are removed to make room for the new ones.

<http://tiny.cc/Anytone-DMR>