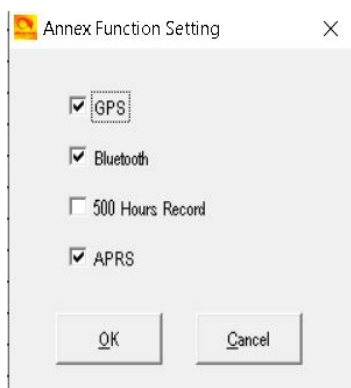


# Setting Up DMR APRS – D168/868/878/578 Radio v9

Turn on APRS in the CPS.

CPS - Tool – Options



## Step One:

Setup a Channel for APRS


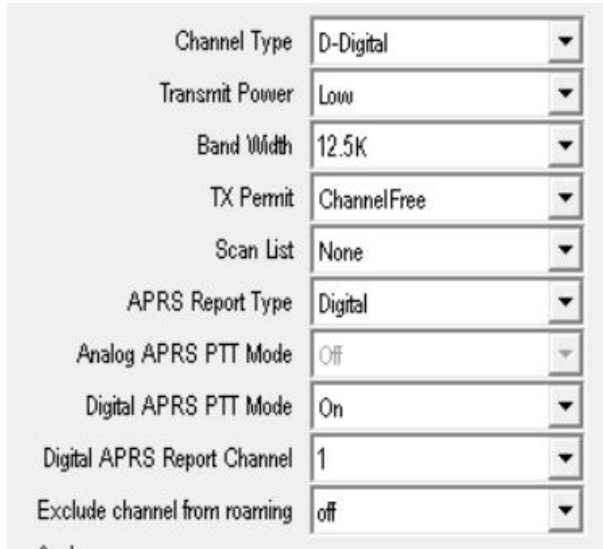
You must designate one of your channels as the default APRS Channel. This will be used for the Frequencies, Color Code

and Time Slot to use that matches the Repeater or Hotspot you are using.

Open this Channel's settings screen and select:

APRS Report to "ON"

APRS Report Channel to "1"

868 Channel	578 878 & plus Channel
	

Click OK.

Repeat this procedure for each channel.

## Step Two:

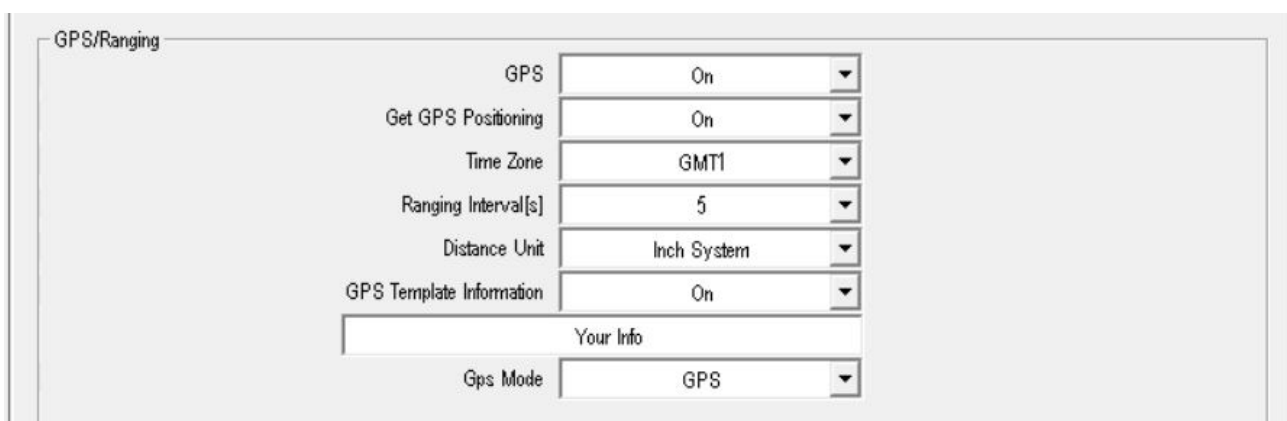
Go to Optional Settings.

Select GPS/Ranging tab.

Select GPS On. (Some 168 do not have GPS)

Select GPS Mode = GPS or Fix 1 to Fix 8

Select all settings as shown below.

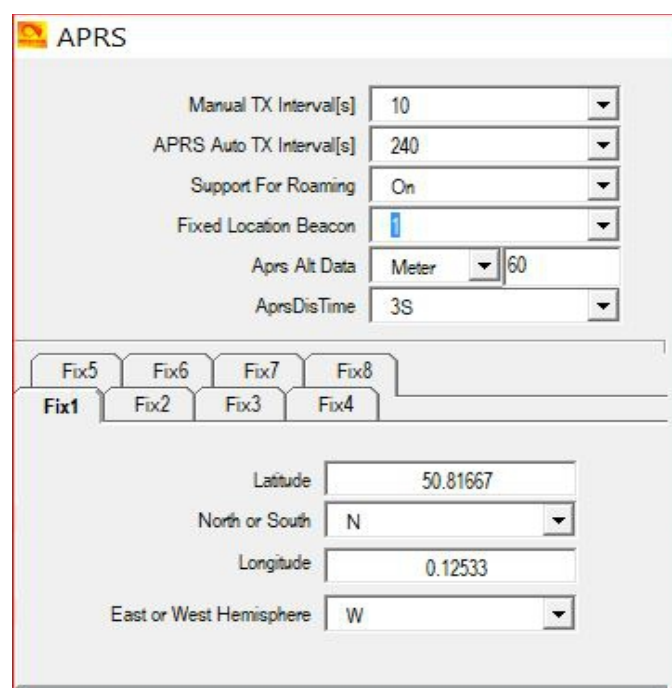


The screenshot shows the 'GPS/Ranging' settings window. It contains several dropdown menus and a text field. The settings are as follows:

Setting	Value
GPS	On
Get GPS Positioning	On
Time Zone	GMT1
Ranging Interval[s]	5
Distance Unit	Inch System
GPS Template Information	On
Your Info	
Gps Mode	GPS

## Non GPS radios. (168)

You will need to use Fixed Location



The screenshot shows the 'APRS' settings window. It contains several dropdown menus and text fields. The settings are as follows:

Setting	Value
Manual TX Interval[s]	10
APRS Auto TX Interval[s]	240
Support For Roaming	On
Fixed Location Beacon	1
Aprs Alt Data	Meter 60
AprsDisTime	3S

Below these settings are tabs for 'Fix1' through 'Fix8'. The 'Fix1' tab is selected, showing the following location data:

Setting	Value
Latitude	50.81667
North or South	N
Longitude	0.12533
East or West Hemisphere	W

Fixed Location Beacon = 1 to 8  
Fill in Fix 1 to Fix 8

### Step Three:

#### Setup Digital APRS Information Screen

At this screen you set your required settings:

1. Manual Tx Intervals
2. APRS Auto TX Intervals
3. Transmit Power set as High for Repeaters or Low for Hotspots
4. Fixed GPS Beacon (semantics on this is wrong it really means Fixed Beacon on or off)
  - a. This gets set as “Not Used” if you want to use the actual GPS data as the location, GPS must be on and have a satellite signal lock for APRS to send
  - b. This is set to “Used” to transmit as a fixed Beacon and it will use the “dd.mm.nn” settings you enter below instead of the GPS (good for testing with no GPS lock)
5. Current Location which will be used as an APRS Beacon
6. The Report Channels you want to use, in this case select Report Channel 1 as the Channel you set in Step One Above
7. **BrandMeister** – Enter APRS number ( **UK is 234999** - USA is 310999 )  
***You must use the correct xxx999 depending on the BM Master your on.***  
*( IRL = 272999. FR = 208999. AUS = 505999. HU = 216999 etc etc )*  
*It is made up off the Masters 1<sup>st</sup> three digits and 999 added.*  
**Phoenix** – Enter APRS number 5057
8. Call Type set to Private Call
9. Set Slot that you want to use typically this would match the Step One Channel settings

Digital APRS Information

Manual TX Intervals[s] 30  
APRS Auto TX Intervals[s] 60  
Transmit Power High  
Fixed Location Beacon Off

Report Channel 1 Current Channel  
Report Channel 2 Current Channel  
Report Channel 3 Current Channel  
Report Channel 4 Current Channel  
Report Channel 5 Current Channel  
Report Channel 6 Current Channel  
Report Channel 7 Current Channel  
Report Channel 8 Current Channel

APRS Talk Group 234999  
Call Type Private Call  
Slot Channel Slot

ddd.ddddd

Latitude 50.82000  
North or South Latitude N  
Longitude 0.12450  
Things E

OK Cancel

OR

APRS

Manual TX Intervals[s] 30  
APRS Auto TX Intervals[s] 60  
Support For Roaming On  
Fixed Location Beacon On

ddd.ddddd

Latitude 50.81667  
North And South Latitude N  
Longitude 0.12533  
East And West Things W

Digital

No.	No.	No.	APRS TG	Call Type
1	Current Channel	Channel Slot	234999	Private Call
2	Current Channel	Channel Slot	5057	Private Call
3	Current Channel	Channel Slot	0	Private Call
4	Current Channel	Channel Slot	0	Private Call
5	Current Channel	Channel Slot	0	Private Call
6	Current Channel	Channel Slot	0	Private Call
7	Current Channel	Channel Slot	0	Private Call
8	Current Channel	Channel Slot	0	Private Call

Repeater Activation Delay [ms] 500

10. Set in each Channel you want to use on ( as in Step One )

APRS Report Type Digital  
Analog APRS PTT Mode Off  
Digital APRS PTT Mode On  
Digital APRS Report Channel 2

2 = No 2 5057

1 = No 1 234999

Pick the number between 1 and 8

## Step 4 BrandMeister

### SelfCare settings

Set Brand option to Motorola

Set APRS Callsign to xxxxx-9 (select from the pull down)

### **Set APRS Icon**

APRS Text – Your Name (Joe Smith UK)

If you do not have an account make one up.

APRS Text is also used for [Talker Alias](#)

Talker Alias (Your Name) gets displayed on Hytera, MD380 and other radios without the need of a Data Base in your radio.

### [More info on sending Talker Alias](#)

## Step 5 Phoenix UK

For those getting to grips with GPS to APRS. There are a few different private talk groups you can send the data to which produce different behaviour on APRS.

RRS &	Radio IDs:
5050 =	without SSID
5055 =	House QTH
5056 =	Camping
5057 =	walking with handheld radio
5058 =	boat
5059 =	car

Works on Repeaters and Hotspots

**This is for Phoenix UK ONLY** and will not work on (Brandmeister see step 4)

### [APRS SSID Recommendations 6 Feb 2012](#)

SSID	Description
-0	Your primary station usually fixed and message capable
-1	Generic additional station, digi, mobile, wx, etc
-2	Generic additional station, digi, mobile, wx, etc

- 3 Generic additional station, digi, mobile, wx, etc
- 4 Generic additional station, digi, mobile, wx, etc
- 5 Other networks (Dstar, Iphones, Androids, Blackberry's etc)
- 6 Special activity, Satellite ops, camping or 6 meters, etc
- 7 Walkie talkies, HT's or other human portable
- 8 Boats, sailboats, RV's or second main mobile
- 9 Primary Mobile (usually message capable)
- 10 Internet, Igates, echolink, winlink, AVRS, APRN, etc
- 11 Balloons, aircraft, spacecraft, etc
- 12 APRStt, DTMF, RFID, devices, one-way trackers\*, etc
- 13 Weather stations
- 14 Truckers or generally full time drivers
- 15 Generic additional station, digi, mobile, wx, etc

<http://tiny.cc/AnytoneDMR>